



# SQUAW VALLEY PUBLIC SERVICE DISTRICT

Please remember that flushing anything other than human waste and toilet paper down the toilet can damage the sewer system. Flushable wipes should **NEVER** be flushed down the toilet because they do not break down. Please discard them in the trash, not the toilet. Other California sewer agencies have reported significant sewage backups due to the improper disposal of wipes and cleaning supplies during the COVID-19 emergency. Do your part to prevent sewer spills and protect Squaw Creek, the Truckee River, and our environment.

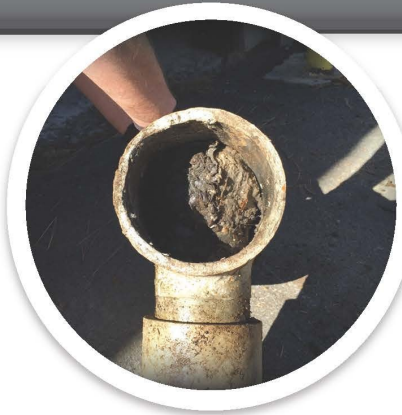
## SAVE THE PIPES! DON'T FLUSH WIPES

(OR ANYTHING OTHER THAN TOILET PAPER)



### SEWER BACKUPS ARE:

- Gross
- Unhealthy
- Costly
- Harmful to our rivers and lakes



CLOGGED PIPES...  
EWWW!

### DID YOU KNOW?

- Most sewer spills are preventable and are the result of misuse of the sewer system
- Flushed baby wipes and other items cause tens of thousands of dollars in damage each year
- Flushing anything other than human waste and toilet paper down the toilet can damage household plumbing, the environment, and the wastewater system



### OK TO FLUSH: NOT OK TO FLUSH:

- Human Waste
- Toilet Paper

- Baby Wipes, including "flushable" wipes
- Paper Towels
- Cotton Swabs
- Tampon/Pads

- Condoms
- Tissue/Kleenex
- Dental Floss
- Diapers
- Cleaning Pads/Wipes



## "FLUSHABLE" WIPES AREN'T FLUSHABLE!

Test after test proves that "flushable" wipes don't break down in the sewer.

### QUESTIONS?

Contact your local  
sewer agency.



[alpinesprings.org](http://alpinesprings.org)



[ntpud.org](http://ntpud.org)



[svpsd.org](http://svpsd.org)



[tcpud.org](http://tcpud.org)



[ttsa.net](http://ttsa.net)



[truckeesan.org](http://truckeesan.org)